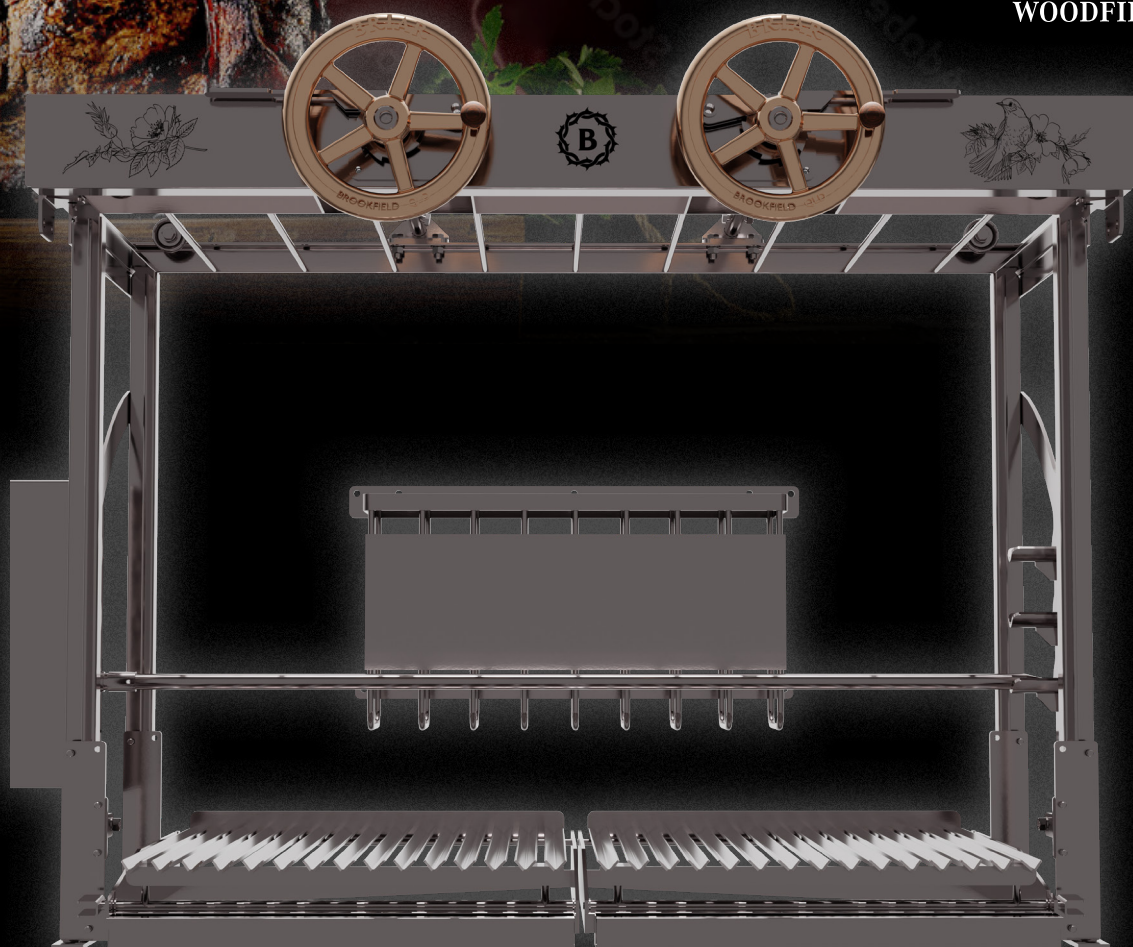




**BRIAR**  
WOODFIRE GRILLS



## *Bringing Everyone Together at the Grill*

### Legacy



Growing up on a rose farm, I learned firsthand that strong roots and a strong community are the key to growth. Inspired by the resilient Briar Rose, essential for growing stunning roses, BRIAR Grill is designed to be the centerpiece of your outdoor kitchen. Crafted for those who appreciate gatherings and understand that the best memories are made around the fire.

### Craftsmanship

At the core of BRIAR Grill is a commitment to sustainability and smart design, without compromising on durability. It features a rear-burning woodfire brazier, built-in rotisserie support, and adjustable height controls using two custom bronze-cast handwheels, thus opening up a multitude of cooking options.

### Quality

Constructed from commercial grade 304 Stainless Steel, the BRIAR Grill stands the test of time, guaranteeing that every get-together is as seamless as the first. With design focused on ease and comfort.

Handmade in Brookfield QLD.

### Your Personal Touch

This grill is already a statement piece. A cooking tool central to your home. You will be spending a lot of time with it together with your friends and family. Which is why we give you the opportunity to choose a motif to the front facing plate with an engraving of your choice. Something you are passionate about, your legacy.

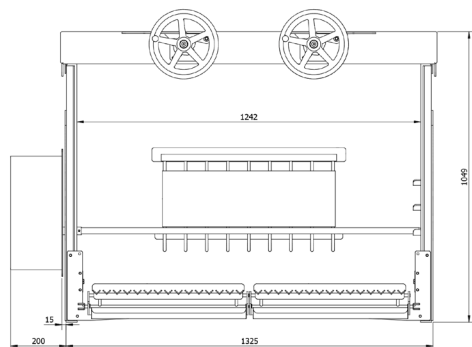
For more information and specifications, visit [briargrill.au](http://briargrill.au) or call Jaco **04118341410** to pre-order yours



# BRIAR Technical Specifications

## Grill Dimensions

1355mm (W) x 1049mm x 850mm (D)



## Materials

### Crankwheels

- Solid Cast Bronze
- Rosewood turned handle

### Grill

- 304 Stainless Steel

## Rotisserie

### Motor Enclosure

- Included

### Motor and Skewer

- Sold separately

### Rotisserie Recess Dimensions

- 424mm x 204mm

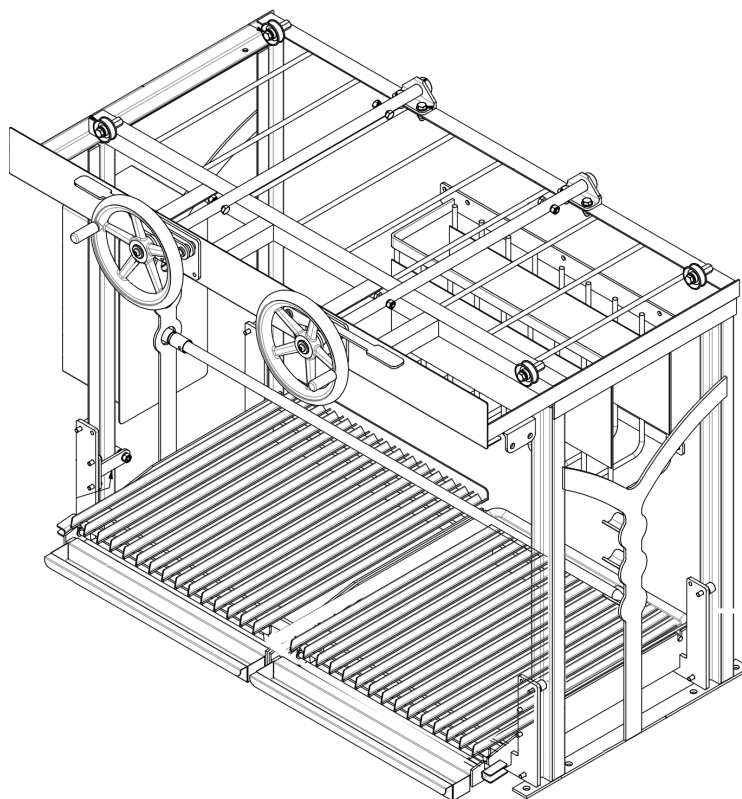
## Contact Details

**Jaco Roeloffs**

0411834140

**Web**

[briargrill.au](http://briargrill.au)

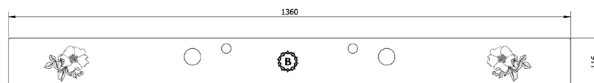


## Grill Build Enclosure

Allow for 1360mm (W) x 1050mm (H) x 920mm (D)

A qualified builder/bricklayer should be consulted/engaged to construct the enclosure and fit a suitable flue. The base is recommended to have a layer of firebricks. The cavity for the Motor Enclosure will need to be coredrilled after the main grill is installed. More detail to be confirmed while planning your enclosure.

## Custom Facia



Dimensions 1360mm (W) x 116mm (H)

There will be a space on each side of the crankwheels to laser engrave a design of your choice (black only). The space available for each is about 250mm x 110mm. This will be finalised with you after purchase.



*The Wild Rose*